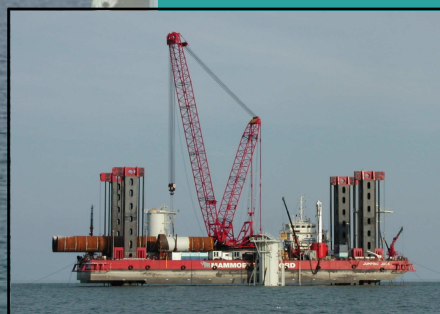


GeoDrive Technology

Windmill Foundation Specialists

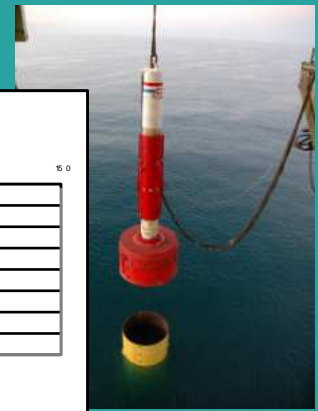
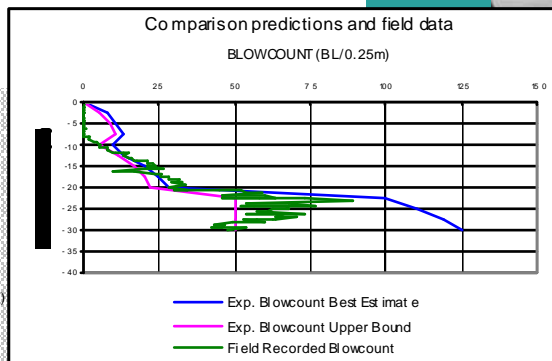


Geodrive Technology BV
PO Box 258
1400 AG Bussum
The Netherlands

Tel: +31 65 161 4213
Fax: +31 35 698 9495
Email: g.jonker@geodrive.nl
Website: www.geodrive.nl

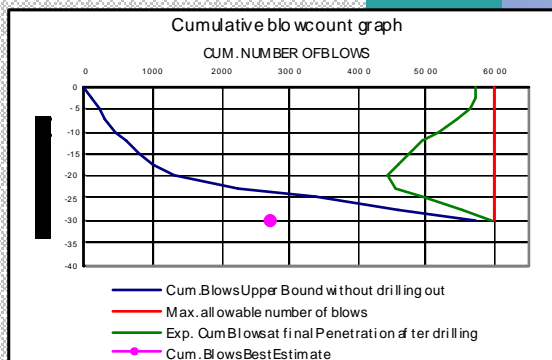
Driveability Predictions:

- using stress-wave simulation programmes
- input based on back-analyses
- special options for DRIVE-DRILL-DRIVE installations
- Output of RAINFLOW COUNT DATA (fatigue analyses)
- Anvil modelling matched with FEM calculations¹⁾
- Vibro Driveability of piles



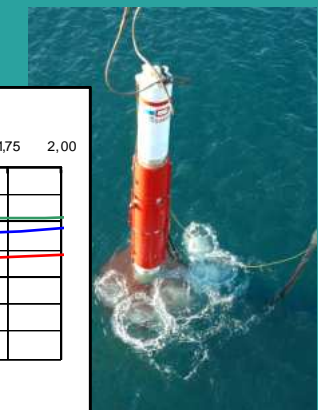
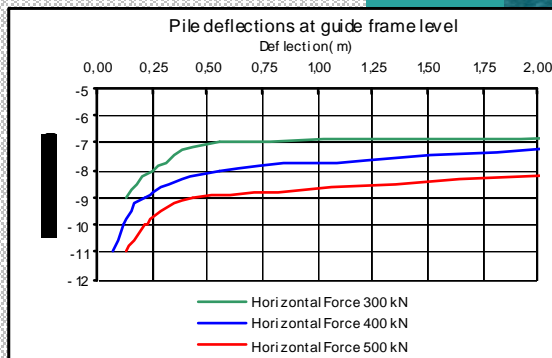
Site Supervision:

- On-Line monitoring of blowcount & cumulative blows
- On-Line prediction of cumulative blows in DRIVE-DRILL-DRIVE mode and recommendation of best penetration to drill out
- On-Site interpretation of in-situ soil conditions based on recorded blowcounts
- On-Site back-analyses of predicted & recorded blowcounts



Miscellaneous Calculations:

- Self-Weight Penetration Calculations
- Horizontal Stability calculations
- Verticality Correction Calculations
- Overturning Moment Stability Calculations
- Fatigue Analyses¹⁾



Dynamic Pile Monitoring:

- PDA monitoring services using TNO equipment²⁾
- CAPWAP analyses on selected piles and levels²⁾
- Fatigue monitoring¹⁾

¹⁾ In cooperation with H&R Engineering BV
²⁾ In cooperation with Conewel BV

